



ELECTRIC ALL-TERRAIN LITTER VACUUM

# LN50 VEV

*Lithium battery pack with up to 9 hours autonomy*

 **Madvac**®



Sourcewell   
Formerly NJPA

 **canoe**  
procurement group of canada

awarded contract vendor

[www.madvac.com](http://www.madvac.com)



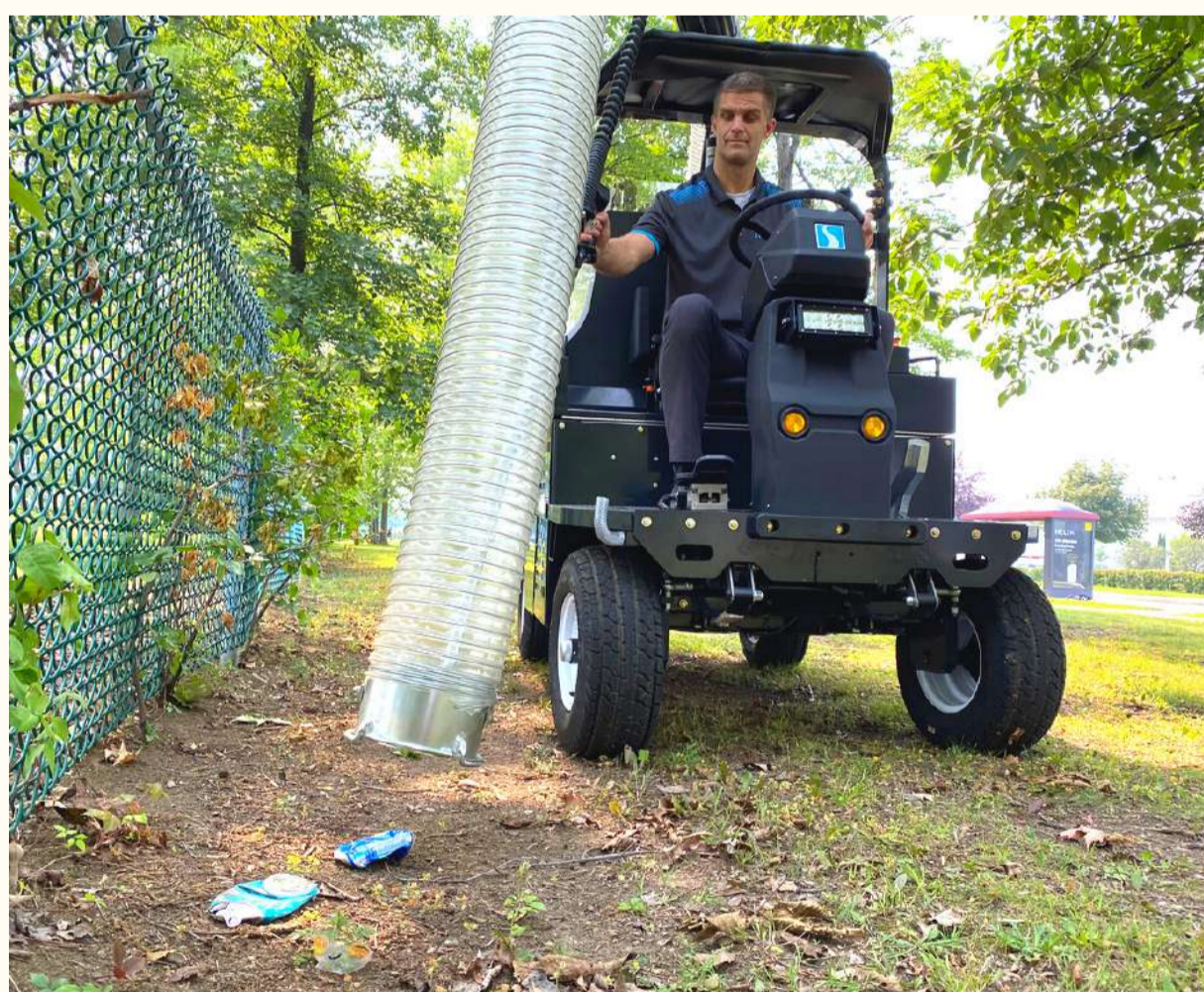


From concrete to grass,  
the electric LN50 can tackle all  
types of urban terrain with ease

- Parks
- Sidewalks
- Bike & pedestrian lanes
- Parking lots
- Curb side
- Alleys
- Pathways
- Alongside buildings

LN50 is the  
perfect all-  
terrain litter  
solution for

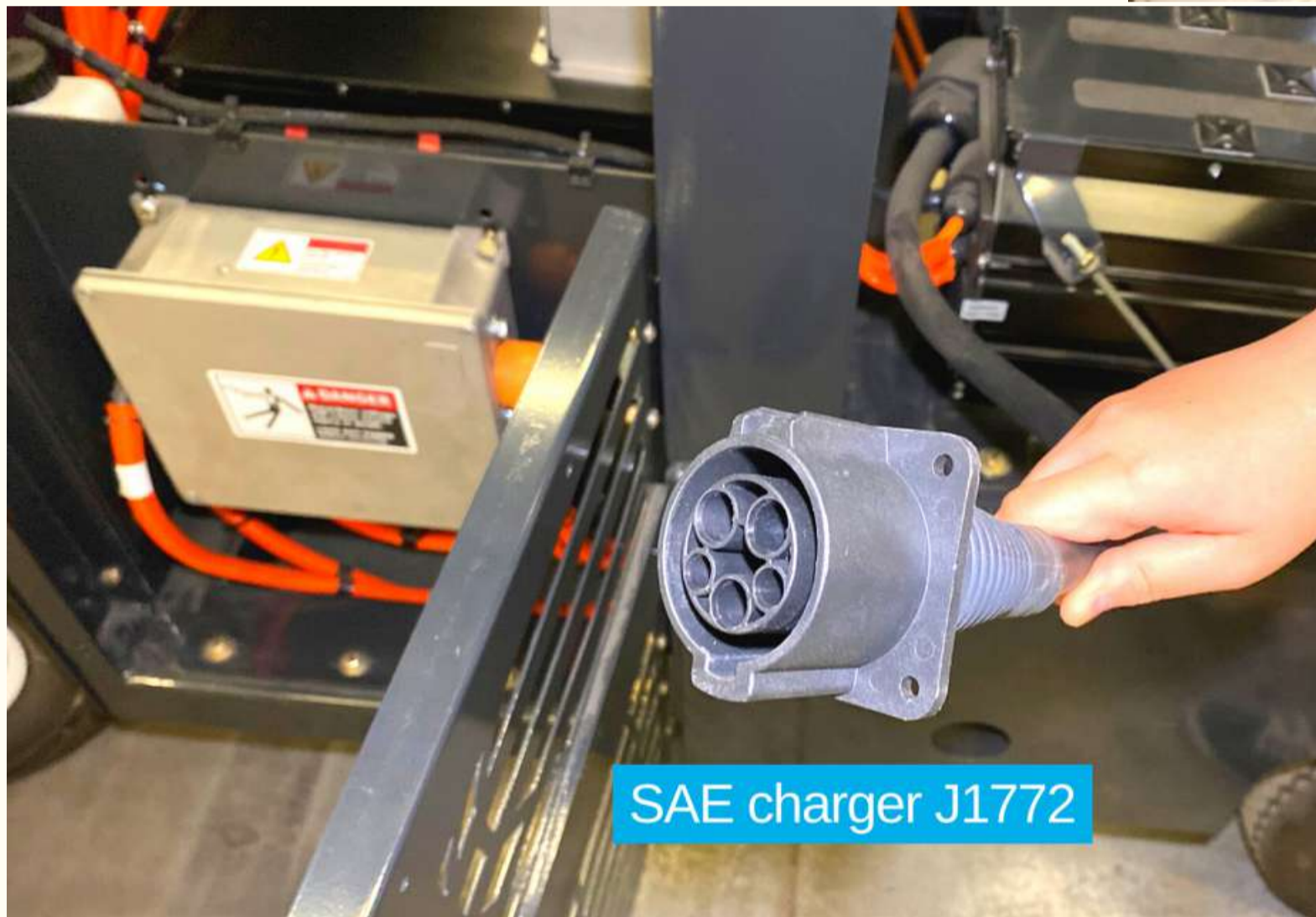
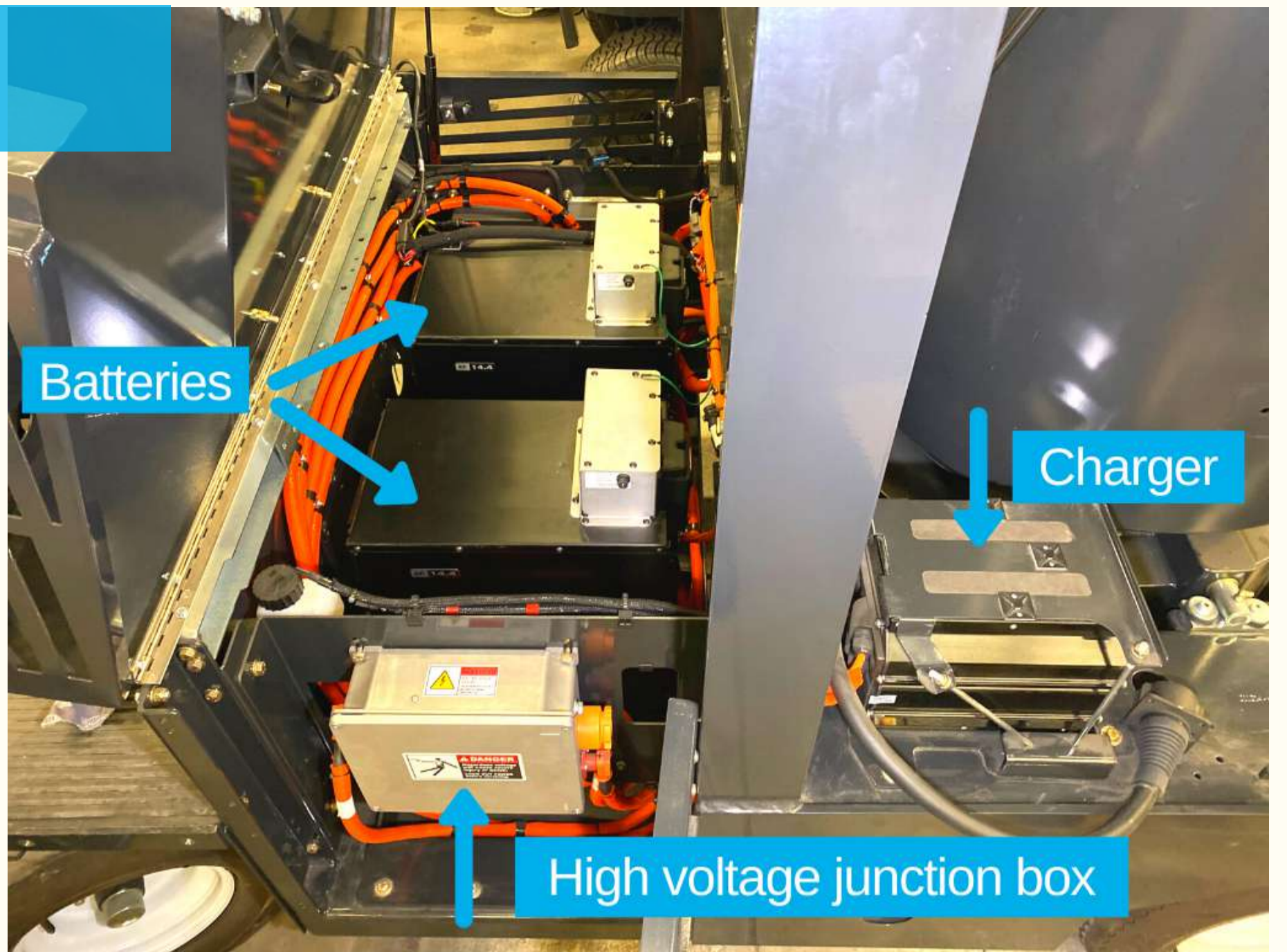
- Cities & municipalities
- Outdoor cleaning contractors
- Airports & seaports
- Transit authorities
- Healthcare services
- Distribution centers
- Shopping malls
- Educational & sports facilities
- Manufacturing facilities
- Amusement parks
- Casinos
- Military
- Correctional facilities





# Key attributes

- LN50 has one of the best compact battery models on the market: Lithium-Ion nickel manganese cobalt (Li NMC) from Zero Motorcycles providing up to 9 hours of autonomy and 3x better "energy per weight and volume" ratio in the industry;
- Approx. 15% lower dB than LN50 diesel model;
- LN50 is the closest equivalent to the discontinued Tennant ATLV 4300;
- Collects litter dry, humid or wet with productivity 6x faster than manual litter picking;



- Effortless litter removal using 48 in. (1219 mm) wide optional vacuum head;
- Optional 15 ft. (4.57 m) retractable wander hose for confined, hard-to-reach areas;
- A CDL permit is not required to operate this machine;
- Fully street legal lighting;
- 10 to 12 year lifespan;
- OEM spare parts shipped within 48 hours;
- Madvac has a 30+ years track record of success - when your machine is due for replacement we'll still be around.

# Built to suit your needs

*Configure the LN50 according to your specific requirements*

- 48 in. (1219 mm) vacuum head
- Retractable wander hose
- Litter collector bags or bagless debris system (Kevlar bin)
- Water mist system (additional dust control)
- Overhead sunshield roof
- Heated seat
- Tire flatproofing
- Fire extinguisher







# Madvac LN50 VEV<sup>+</sup>

## Data & Performance Information

### Power

Power pack	Lithium-Ion nickel manganese cobalt (Li NMC) high energy capacity, up to 28.8 kWh
Voltage	104 volts battery pack (2 batteries)
Charger	On board charger 6kW
Charger outlet	J1772 level 2, 240V/24A
Charging time	5 hours (15-18 h if 120-v wall socket)
Autonomy	Up to 9 hours

### Litter Collection System

Type	Straight-through system compacts litter at 2:1 ratio
Litter capacity	75 gal. (284 L)
Container construction	16 gauge powder-coated steel
Vacuum hose	7 in. (178 mm)
Wander hose	Diameter: 6 in. (152 mm); length: 15 ft. (4.57 m)
Bagless system	Kevlar bin can be filled and emptied into off-the-shelf bags

### Frame and Body

- Heavy gauge steel body on a welded 1/4 in. (6.35 mm) structural steel frame
- Electrostatic powder-coated paint

### Dimensions (\*base model)

Width	48 in. (1219 mm)
Length	95 in. (2413 mm)
Height	92 in. (2337 mm)
Wheelbase	69 in. (1753 mm)
Ground clearance	10 in. (254 mm)



Proud manufacturer of the Madvac product line

#### Telephone:

- 1-855-651-0444 (toll free - US/Canada)
- 1-450-651-0444 (international)

**Fax:** 450-651-0447

**Email:** info@exprolink.com

**Address:** 2170 Rue de la Province

Longueuil QC  
Canada J4G 1R7

**Website:** [www.madvac.com](http://www.madvac.com)

**Sourcwell** (US) and **Canoe**

(Canada) contract vendor

number: **093021-EXP**

### Vacuum System

Vacuum rating	Up to 1800 CFM
---------------	----------------

### Controls

Steering	Power assisted
Propulsion	Forward, neutral, reverse; push button shifter

### Traction

Drive	Propulsion with 17 to 1 ratio
Forward speed	12 mph (20 km/h)
Tires (all 4 wheels)	Regular 20.5 in. (521 mm); Turf 20 in. (508 mm)
Brakes	Drum service brakes with electromagnetic parking brake
Gradeability	11.3 degree (20%)
Curb weight	2430 lbs (1102 kg)

### Suspension

Front	Leaf spring
Rear	Leaf spring

### dB Rating (front)

Cabin	85 dB
10 feet away	71 dB



*Technical specs are subject to change without prior notice*