

ALL-TERRAIN LITTER VACUUM

LN50

Compact urban cleaning vehicle

 **Madvac**®

Sourcewell
Formerly NJPA

 **canoe**
procurement group of canada

awarded contract vendor



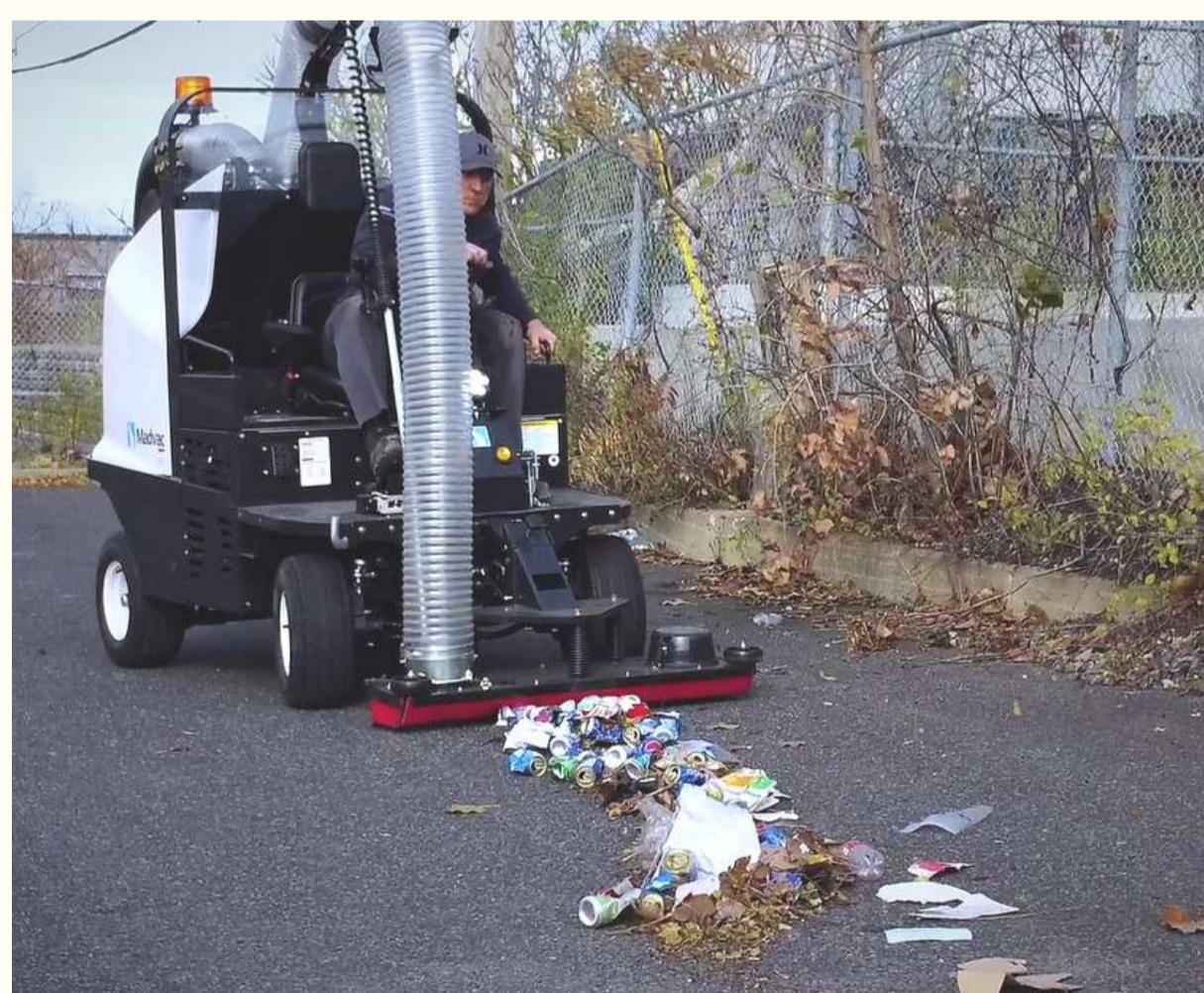
www.madvac.com

Technical specs are subject to change without prior notice



From concrete to grass,
the LN50 can tackle all types
of urban terrain with ease

- Parks
- Sidewalks
- Bike & pedestrian lanes
- Parking lots
- Curb side
- Alleys
- Pathways
- Alongside buildings



Two-position hydraulic-assist system



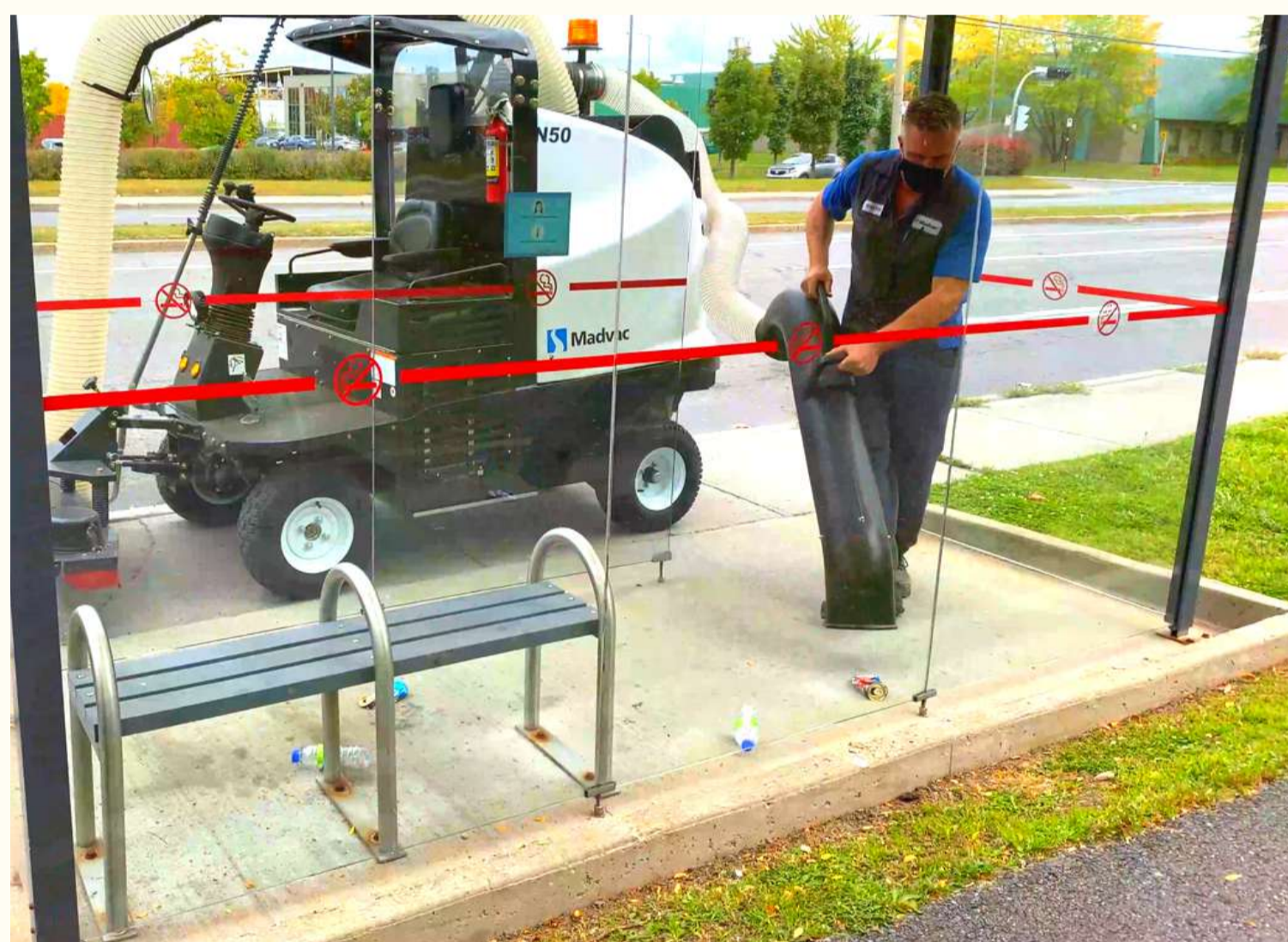
LN50 is the
perfect all-
terrain litter
solution for

- Cities & municipalities
- Outdoor cleaning contractors
- Airports & seaports
- Transit authorities
- Healthcare services
- Distribution centers
- Shopping malls
- Educational & sports facilities
- Manufacturing facilities
- Amusement parks
- Casinos
- Military
- Correctional facilities



Key Attributes

- LN50 is the closest equivalent to the discontinued Tennant ATLV 4300;
- Productivity 6x faster than manual litter picking;
- Collects litter dry, humid or wet;
- Effortless litter removal using 48 in. (1219 mm) wide vacuum head;
- 15 ft. (4.57 m) retractable wander hose for hard-to-reach areas;



- A CDL permit is not required to operate this machine;
- Fully street legal lighting;
- 10 to 12 year lifespan;
- OEM spare parts shipped within 48 hours;
- Madvac has a 35+ years track record of success - when your machine is due for replacement we'll still be around.

Built to suit your needs

Configure the LN50 according to your specific requirements

- 48 in. (1219 mm) vacuum head
- Retractable wander hose
- Litter collector bags or bagless debris system (Kevlar bin)
- Water mist system (additional dust control)
- Overhead sunshield roof
- Heated seat
- Floor-mounted heater
- Tire flatproofing
- Fire extinguisher

To request a quote www.madvac.com
Diesel / Gas -> LN50 -> Request a quote





Madvac LN50

Data & Performance Information

Capacities

Fuel tank	10.2 gal. (39 L)
Hydraulic system	12.5 gal. (47 L)
Litter capacity	75 gal. (284 L)

Engine Data

Model	Kubota Diesel D1105-E4B (EPA Tier 4 Final)
Displacement	68.53 cu.in. (1123 cc)
Gross rated power	24.8 hp (18.5 kW) @3200 rpm
Legislation compliance	EPA Tier 4 Final
Air cleaner	2-stage Donaldson with restriction indicator

Litter Collection System

Type	Straight-through system compacts litter at 2:1 ratio
Container construction	16 gauge powder-coated steel
Vacuum hose	7 in. (178 mm)
Wander hose	Diameter: 6 in. (152 mm); length: 15 ft. (4.57 m)

Frame and Body

- Heavy gauge steel body on a welded 1/4 in. (6.35 mm) structural steel frame
- Electrostatic powder-coated paint

Dimensions (* base model)

Width	48 in. (1219 mm)
Length	95 in. (2413 mm)
Height	92 in. (2337 mm)
Wheelbase	69 in. (1753 mm)
Ground clearance	10 in. (254 mm)

Vacuum System

Vacuum rating	1800 CFM
---------------	----------

Controls

Steering	Adjustable tilt steering column
Motion control	Heavy duty hydrostatic

Traction

Drive	Front wheel drive
Forward speed	11 mph (18 km/h)
Tires (all 4 wheels)	Regular 20.5 in. (521 mm); Turf 20 in. (508 mm)

Brakes	Front hydrostatic brake; rear mechanical disc parking brake
--------	---

Gradeability	11.3 degree (20%) with full & empty hopper
--------------	--

Curb weight	2579 lbs (1170kg)
-------------	-------------------

Suspension

Front	Leaf spring
Rear	Leaf spring



Proud manufacturer of the Madvac product line

Telephone:

- 1-855-651-0444 (toll free - US/Canada)
- 1-450-651-0444 (international)

Fax: 450-651-0447

Email: info@exprolink.com

Address:

2170 Rue de la Province
Longueuil QC
Canada J4G 1R7

Website:

www.madvac.com

Sourcwell (US) and **Canoe**

(Canada) contract vendor

number: **093021-EXP**